

8.26 TRIPURA

8.26.1 Introduction

Tripura, situated in the northeastern part of India, shares international border with Bangladesh from three sides. It is one of the smallest States in India with an area of 1.05 million ha. The State lies approximately between lat 22°57' and 24°33' N and long 91°10' and 92°20' E. The main rivers flowing through the State are Khowai, Dhalai, Manu and Deo.

The climate of the State is generally moist and humid. The minimum and maximum temperatures in summer are 21°C and 38°C and in winter it ranges between 4°C and 33 °C. The average annual rainfall varies between 2,250 mm to 2,500 mm.

The population of the State is 3.20 million (*Census 2001*), of which 82.94% is rural and 17.06% urban. The population density is 305 persons/km². About 31.5% people belong to Scheduled Tribes. The livestock population of the State is 1.46 million (*Livestock Census 2003*), which has decreased by nearly 8% since the census of 1992.

Land use pattern of the State is given in Table 8.26a.

8.26.2 Forest Resources

The recorded forest area is 6,294 km² which is 60.02 % of the geographic area of the State. By legal status, Reserved Forests constitute 66.33 %, Protected Forests, 0.03 %, and Unclassed Forests, 33.64 %.

Major forest types occurring in the State are Tropical Moist Deciduous and Sub-Tropical Broad Hill forests. Bamboos are predominant in the forests of the State.

Table 8.26a : Land use pattern

Land Use	Area in '000 ha	Percentage
Total geographical area	1,049	
Reporting area for land utilization	1049	100.00
Forests	606	57.77
Not available for cultivation	134	12.77
Permanent pastures and other grazing lands	n	0.00
Land under misc. tree crops & groves	27	2.57
Culturable wasteland	1	0.10
Fallow lands other than current fallows	1	0.10
Current Fallows	1	0.10
Net area sown Relates to the year 1998-99.	280	26.69

(n) : Included under the head 'Land under Miscellaneous tree crops and groves etc.

Source: *Land Use Statistics, Ministry of Agriculture, GOI, 2005.*

8.26.3 Protected Areas

Tripura has four Wildlife Sanctuaries covering an area of 603.62 km², constituting 5.76 % of the total geographic area of the State.

8.26.4 Joint Forest Management

Joint Forest Management began in the State in 1991. There are 374 JFM Committees managing about 0.10 million ha of forest area as on March 2005, which is about 17% of the forest area of the State. More than 33,000 families are involved in this programme, of which around 17,000 families belong to the Scheduled Tribes.

Source: *Proceedings of the National Workshop on JFM, MoEF, 2005.*

8.26.5 Forest Cover

The forest cover of the State, based on satellite data of November-December 2004, is 8,155 km², which is 77.73% of the geographic area. Very dense forest accounts for 61 km², moderately dense forest is 4,969 km², and open forest 3,125 km². The forest cover of the State is shown in Fig 8.26.

An increase of 32 km² of forest cover has been assessed in the present assessment as compared to the previous assessment (based on satellite data of December 2002 & February 2003).

The change matrix, given in Table 8.26b reveals that there has been an overall increase of 3 km² in very dense

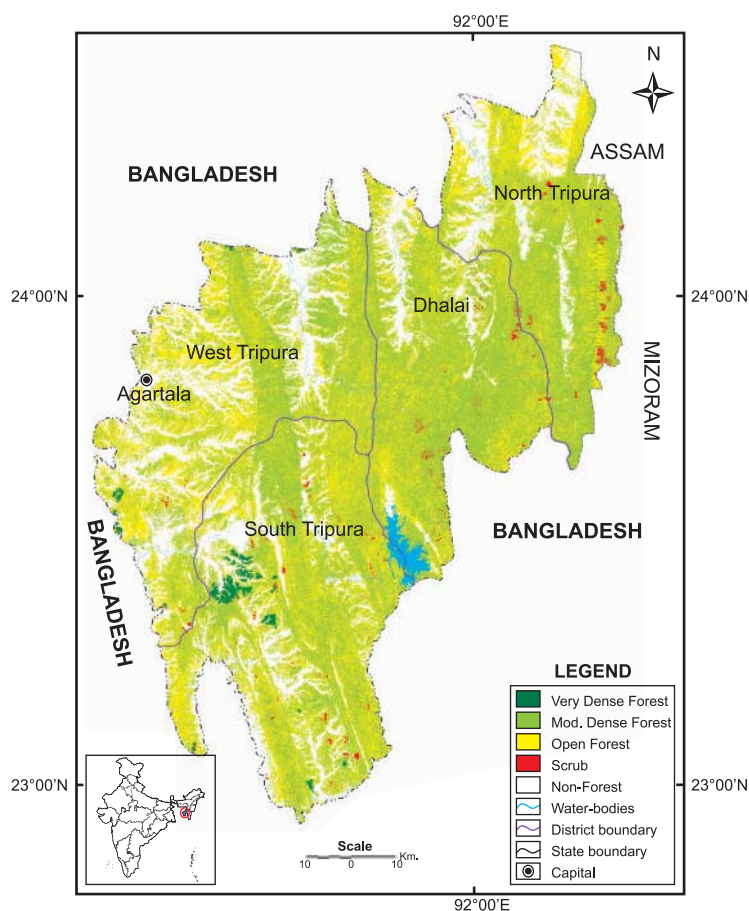


Fig 8.26 : Forest Cover Map of Tripura

Table 8.26b: Forest cover change matrix

(area in km²)

2003 Assessment(Data of Dec.2002 & Feb.2003)	2005 Assessment (Data of Nov. - Dec. 2004)					Total 2003
	VDF	MDF	OF	Scrub	NF	
Very Dense Forest	58	0	0	0	0	58
Moderately Dense Forest	3	4,940	9	16	4	4,972
Open Forest	0	29	3,037	17	10	3,093
Scrub	0	0	0	1	0	1
Non Forest	0	0	79	25	2,263	2,367
Total 2005	61	4,969	3,125	59	2,277	10,491
Net Change	3	-3	32	58	-90	

forest, a decrease of 3 km² in moderately dense forest, and an increase of 32 km² in open forest. Non forest has decreased by 90 km².

The increase in forest cover is due to regrowth of abandoned shifting cultivation areas in South Tripura and West Tripura districts.

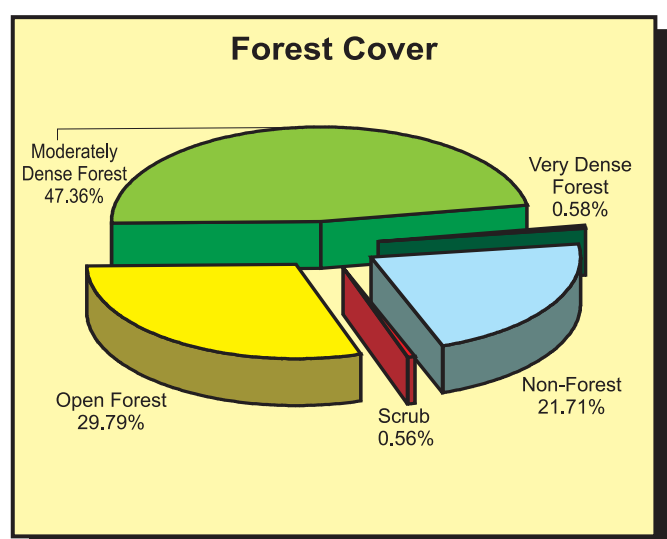
The district wise details of very dense forest, moderately dense forest, open forest and scrub, along with the changes compared to 2003 assessment, have been provided in Table 8.26c.

Table 8.26c: District-wise forest cover
Number of Districts:4

(area in km²)

District	Geographic area	2005 Assessment				Percent of G.A.	Change	Scrub
		Very dense forest	Mod. dense forest	Open forest	Total			
Dhalai TH	2,402	0	1426	601	2027	84.39	-2	15
North Tripura TH	2,039	0	939	561	1500	73.57	-24	21
South Tripura TH	3,057	50	1446	997	2493	81.55	38	19
West Tripura TH	2,993	11	1158	966	2135	71.33	20	4
Total	10,491*	61	4969	3125	8155	77.73	32	59

*Provisional area as per Survey of India.



8.26.6 Tree Cover

Tree cover of Tripura has been estimated following a sampling based approach. A separate exercise was carried out where high resolution satellite data (5.8m) has been used for identification of tree patches for field inventory. The estimated tree cover in the State is 134 km². Being a forest rich State, there is a limited scope of expanding tree cover outside the forest areas.

The forest and tree cover of the State is presented in the Table 8.26d.

Table 8.26d: Forest & tree cover

(area in km²)

Category	Area	% of Geographical Area
Tree Cover	134	1.28
Forest Cover	8,155	77.73
Forest & Tree Cover	8,289	79.01