

7.31 CHANDIGARH

7.31.1 Introduction

The Union Territory of Chandigarh is located near the foothills of the Shiwaliks range in northwestern region of the country and lies between 30°39' and 30°49' N latitude and 75°41' and 76°51'E longitude. It has a geographical area of 114 km². The territory is also the State capital of Punjab and Haryana.

Chandigarh has cold dry winter, hot summer and subtropical monsoon. The average annual rainfall ranges between 400-600 mm. The temperature varies between 1°C to 45°C.

The population of Chandigarh is 0.90 million (Census 2001) which constitutes 0.09% of country's population. The population density is 9,096 persons km². Urban population in the UT is 90%. The projected population of the UT by the Office of RGI, for the year 2009 is 1.30 million. The livestock population is 31,000 (Livestock Census 2003).

Land use pattern of the Union Territory is given in Table 7.31.1.

7.31.2 Recorded Forest Area

The recorded forest area of the UT is 34 km²

which is 29.82% of geographical area. Reserved Forests constitute 91.18% and Unclassed Forests 8.82% of the total forest area.

7.31.3 Protected Areas

Chandigarh has 2 Wildlife Sanctuaries covering an area of 26.02 km², which constitutes 22.82% of the UT's geographical area. Sukhna lake sanctuary with 1,986 ha area is famous for aquatic birds from Central Asia and Siberia.

7.31.4 Forest Cover

The forest cover of the UT, based on satellite data of Oct 2006, is 17 km², which is 14.91% of the geographical area. Very dense forest is 1 km², moderately dense forest 10 km², and open forest 6 km². The distribution of forest cover of the UT is shown in Fig. 7.31.

There is no change in forest cover and its density as compared to the previous assessment (based on satellite data of Nov 2004) hence no change matrix is given.

There is only one district in Chandigarh, and the details given for the UT also hold for the district shown in Table 7.31.2.

Table 7.31.1: Land use pattern

Land Use	Area in '000 ha	Percentage
Total geographical area	11	
Reporting area for land utilization	7	100.00
Forests	0	0
Not available for cultivation	5	71.43
Permanent pastures and other grazing lands	0	0
Land under misc. tree crops & groves	0	0
Culturable wasteland	0	0
Fallow lands other than current fallows	0	0
Current fallows	0	0
Net area sown	0	0

Source: Land Use Statistics, Ministry of Agriculture, GOI, 2006.

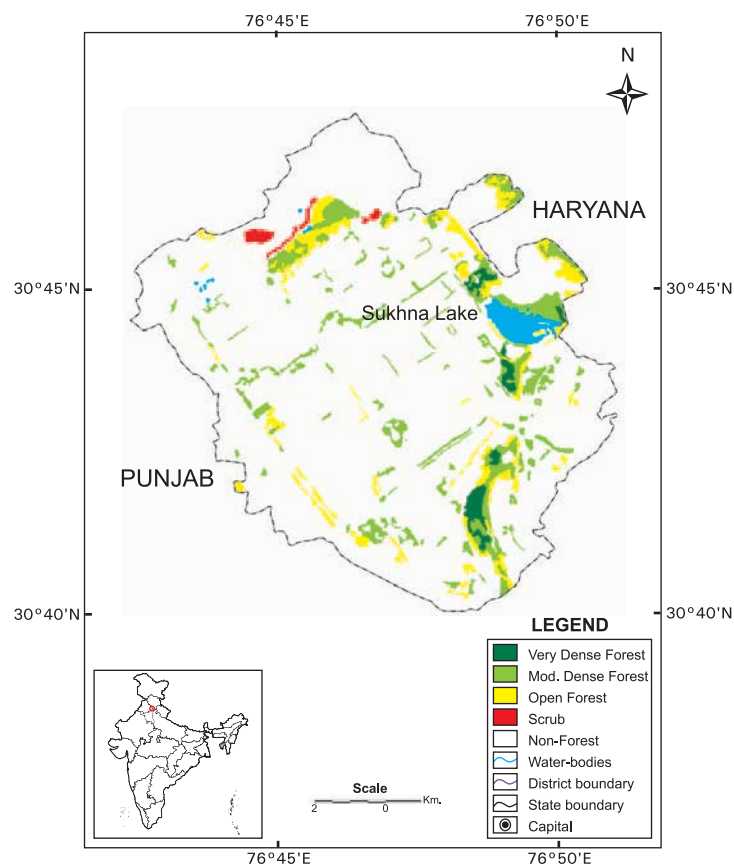
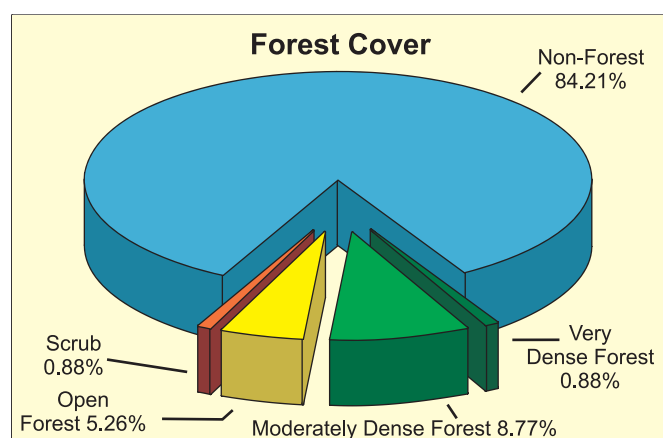


Fig. 7.31 : Forest cover map of Chandigarh

Table 7.31.2: District-wise forest cover in 2007

Number of districts: 1

(area in km²)

District	Geographical area	Very dense forest	Mod. dense forest	Open forest	Total	% of G.A.	Change*	Scrub
Chandigarh	114	1	10	6	17	14.91	0	1

* Change compared to 2005 assessment (revised).

7.31.5 Altitude Zone wise Forest Cover

All the forest cover of the UT lies in one altitude zone as given in Table 7.31.3.

Table 7.31.3: Altitude zone wise forest cover

(area in km²)

Altitude Zone	VDF	MDF	OF	Total
0-500m	1	10	6	17
Total	1	10	6	17

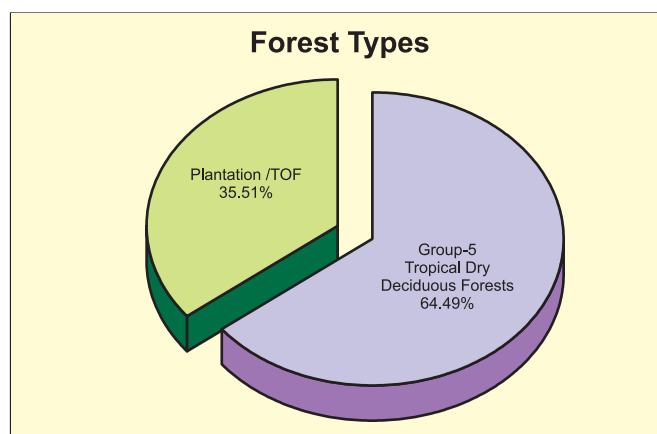
(based on SRTM Digital Elevation Model)

7.31.6 Forest Cover in different Forest Types

The UT has 2 different forest types as per Champion & Seth's classification system (1968) belonging to the Tropical Dry Deciduous Forests type group. Distribution of forest cover in different forest type groups found in the UT is given in the pie diagram.

7.31.7 Tree Cover

Tree cover of the Union Territory has been estimated using sample data of TOF inventory collected over a period of six years i.e. 2002-08. The estimated tree cover in the UT is 11 km² which is 9.65% of



the geographical area of the UT. The forest and tree cover of the UT is presented in the Table 7.31.4.

Table 7.31.4: Forest & tree cover

(area in km²)

Category	Area	% of Geographical area
Tree Cover	11	9.65
Forest Cover	17	14.91
Forest & Tree Cover	28	24.56