

7.32 DADRA & NAGAR HAVELI

7.32.1 Introduction

The Union Territory comprises two distinct geographical units, namely, Dadra and Nagar Haveli. It is situated on the western side of the foothills of Western Ghats and lies between latitude 20°0' & 20°25' N and longitude 72°50' and 73°15' E. It has an area of 491 km². It has a hilly terrain towards the northeast and east, surrounded by the Sahyadris range of Western Ghats. The terrain is intersected by the river Daman Ganga and its three tributaries.

The annual rainfall ranges between 2,000 to 2,500 mm. The average annual temperature ranges between 25°C to 27.5°C.

As per Census 2001, the total population of the UT is 220,490 of which the rural population is 77.11%. The population density is 449 persons per km². The Scheduled Tribes constitute 62.2% of the population. The projected population of the UT is 0.32 million (as projected by Office of RGI for 2009). The livestock population is 78,000 as per Livestock Census 2003, which has increased by nearly 10% since the Census of 1992.

Land use pattern of the Union Territory is given in Table 7.32.1.

7.32.2 Recorded Forest Area

The recorded forest area is 204 km², which is 41.55% of the geographical area of the UT. Reserved Forests constitutes 97.55% and Protected Forests 2.45% of the total forest area.

7.32.3 Protected Areas

An area of 9,216 ha is being managed as protected area under 1 Wildlife Sanctuary, which constitutes 18.77% of the geographical area.

7.32.4 Forest Cover

The forest cover in the UT, based on interpretation of satellite data of Dec 2007, is 211 km², which is 42.97% of the UT's geographical area. In terms of forest canopy density classes, the UT has 114 km² moderately dense forest and 97 km² open forest. The distribution of forest cover of the UT is shown in Fig. 7.32.

Comparison of the current forest cover (satellite data of Dec 2006) with the previous assessment (satellite data of Nov 2004) shows a loss of 5 km² of forest cover.

The change matrix, given in Table 7.32.2, reveals that there has been a decrease of 1 km² in the

Table 7.32.1: Land use pattern

Land Use	Area in '000 ha	Percentage
Total geographical area	49	
Reporting area for land utilization	49	100.00
Forests	20	40.82
Not available for cultivation	4	8.16
Permanent pastures and other grazing lands	1	2.04
Land under misc. tree crops & groves	0	0.00
Culturable wasteland	0	0.00
Fallow lands other than current fallows	1	2.04
Current fallows	1	2.04
Net area sown	22	44.90

Source: Land Use Statistics, Ministry of Agriculture, GOI, 2006.

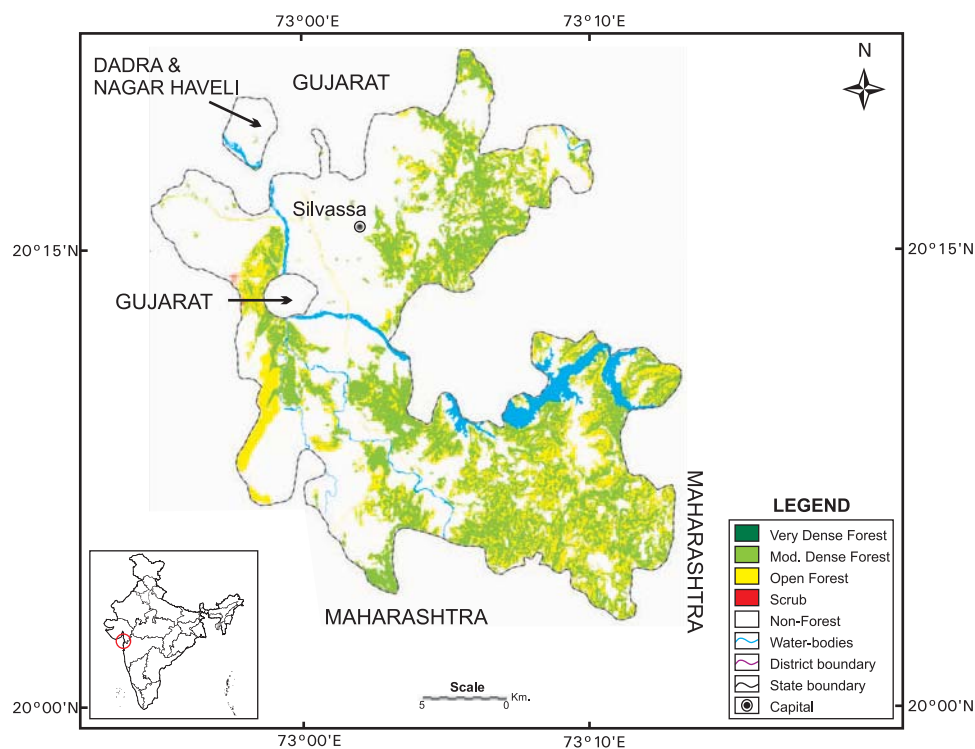
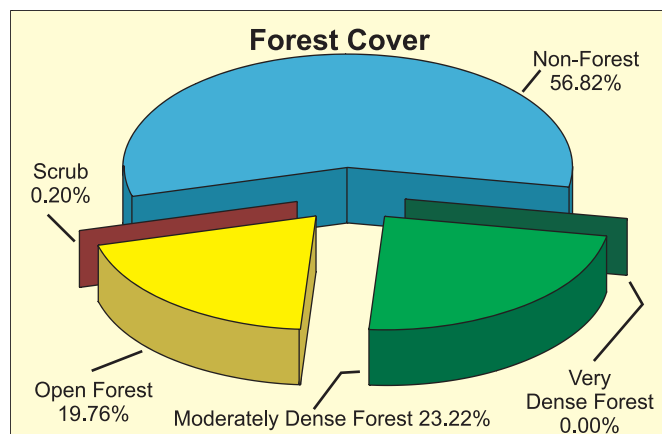


Fig. 7.32 : Forest cover map of Dadra & Nagar Haveli



moderately dense forest and 4 km² in open forest.

On the basis of ground truthing by the officials of FSI, the main reason for the net decrease in forest cover is encroachment.

District wise forest cover in different canopy density classes and scrub along with the changes compared to 2005 assessment is given in the Table 7.32.3.

Table 7.32.2: Forest cover change matrix

(area in km²)

2005 Assessment (Data of Nov 2004)	2007 (Data of Dec 2006)					Total of 2005
	VDF	MDF	OF	Scrub	NF	
Very Dense Forest	0	0	0	0	0	0
Moderately Dense Forest	0	114	0	0	1	115
Open Forest	0	0	97	1	3	101
Scrub	0	0	0	0	0	0
Non-Forest	0	0	0	0	275	275
Total of 2007	0	114	97	1	279	491
Net Change	0	-1	-4	1	4	

Table 7.32.3: District-wise forest cover in 2007

Number of districts: 1

(area in km²)

District	Geographical area	Very dense forest	Mod. dense forest	Open forest	Total	% of G.A.	Change*	Scrub
Dadra & Nagar Haveli	491	0	114	97	211	42.97	-5	1

* Change compared to 2005 assessment (revised).

7.32.5 Altitude Zone wise Forest Cover

All the forest cover of the UT lies in one altitude zone as given in Table 7.32.4.

Table 7.32.4: Altitude zone wise forest cover

(area in km²)

Altitude Zone	VDF	MDF	OF	Total
0-500m	0	114	97	211
Total	0	114	97	211

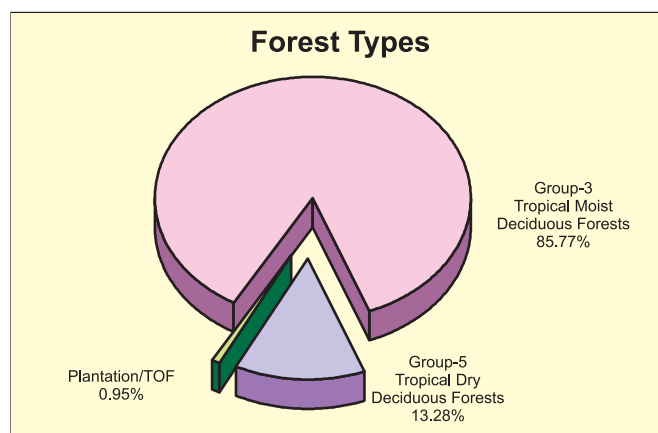
(based on SRTM Digital Elevation Model)

7.32.6 Forest Cover in different Forest Types

As per Champion & Seth Classification, the UT has 4 forest types which belong to 2 forest type groups viz Tropical Moist Deciduous and Tropical Dry Deciduous Forests. Distribution of forest cover in different forest type groups found in the UT is given in the pie diagram.

7.32.7 Tree Cover

Tree cover of the Union Territory has been estimated using sample data of TOF inventory collected over a period of six years i.e. 2002-08. The estimated tree cover in the UT is 27 km² which is 5.50% of the



geographical area of the UT. The forest and tree cover of the Union Territory is presented in the Table 7.32.5.

Table 7.32.5: Forest & tree cover

(area in km²)

Category	Area	% of Geographical area
Tree Cover	27	5.50
Forest Cover	211	42.97
Forest & Tree Cover	238	48.47