

## **Assessment of Mangrove in India**

### **Background:**

It is an ongoing project sanctioned by the Ministry of Environment & Forests, Government of India in March 2003 with a budget outlay of Rs 60,77,000/-. The project envisaged remote sensing data based mapping of mangroves and assessment of change in mangrove cover between 1997 and 2002. The approved work programme includes:

1. Assessment of mangrove cover of all the coastal States/UTs using remote sensing and prepare digital maps of all these areas on 1:250,000 scale and preparation of the mangrove Atlas.
2. Assessment of change in the identified Mangrove areas in the country during 1997-2002 and identify degraded mangrove areas for regeneration of Mangroves in the country.
3. A GIS study for Sunderbans (West Bengal).

### **Data Input and Methodology:**

For preparation of mangrove cover maps and atlas, satellite data of LISS-III of IRS 1D for the year 2002 was used. For assessment of change in forest cover, satellite data of LISS-III of IRS 1C for the year 1997-98 was used. Digital image processing was done by standard method using ERDAS imagine software as is done in regular forest cover mapping by the FSI.

### **Progress:**

Mapping of mangrove maps for the all the coastal States/UTs is completed and atlas of mangrove is under preparation. Works related to GIS study on Sunderbans has also been started and spatial as well as attribute information is being procured from the West Bengal Forest Department.

**DISTRICT- GUNTUR**  
**ANDHRA PRADESH**

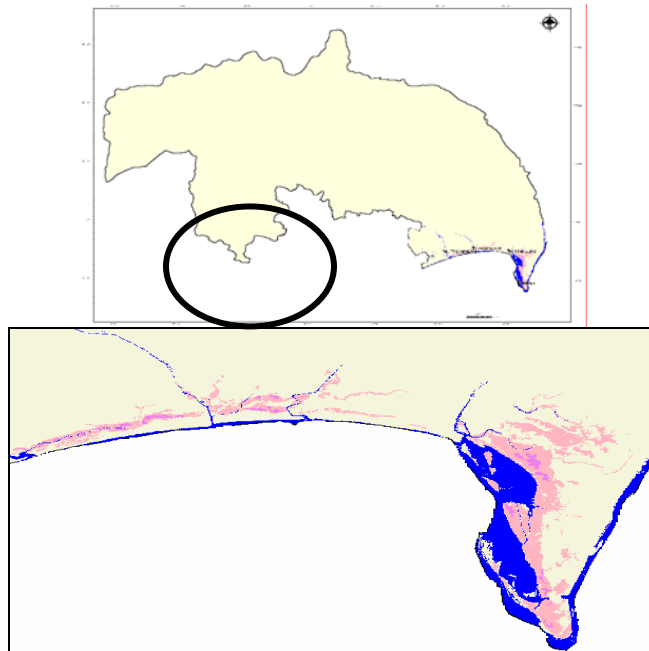


Fig 31: Mangrove Cover in Guntur district (AP)

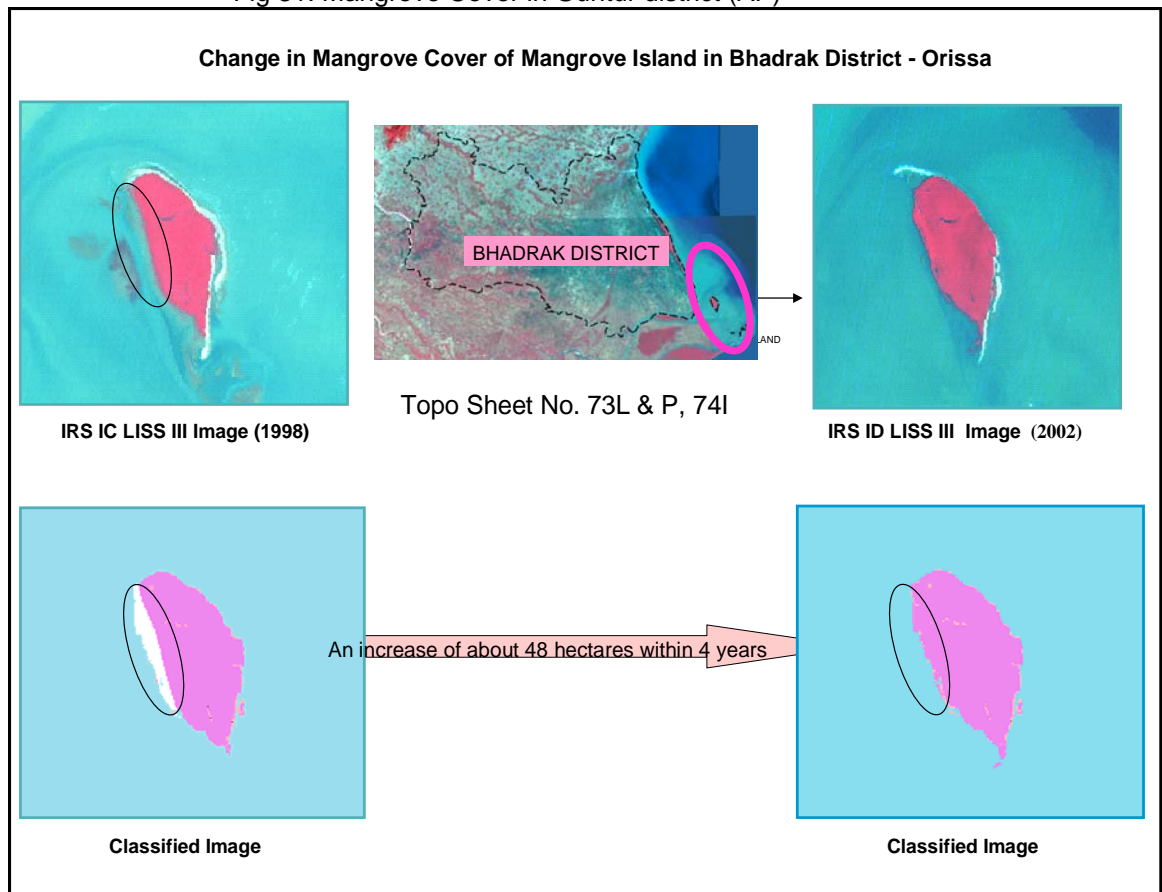


Fig 32: Chages in Mangrove Cover of Mangrove Island in Bhadrak District.