

## 9.31 CHANDIGARH

### 9.31.1 Introduction

The Union Territory of Chandigarh is located near the foothills of the Shiwalik range in north-western region of the country and lies between 30° 39' N and 30° 49' N latitude and 75°41' E and 76°51' E longitude. It has a geographical area of 114 km<sup>2</sup>. The territory is also state capital of Punjab and Haryana. Chandigarh has cold dry winter, hot summer and sub tropical monsoon. The average annual rainfall ranges between 400-600 mm. The annual temperature varies between 1°C to 45°C.

The population of Chandigarh is 1.05 million (*Census 2011*) which constitutes 0.09% of country's population. The population density is 9252 persons per km<sup>2</sup>. Urban population in the UT is 97.25% and rural population is 2.75%. The livestock population is 0.03 million (*Livestock Census 2007*).

Land use pattern of the Union Territory is given in Table 9.31.1.

**Table 9.31.1: Land Use Pattern**

Land Use	Area in '000 ha	Percentage
Total geographical area	11	
Reporting area for land utilization	6	100.00
Forests	0	0
Not available for cultivation	5	83.33
Permanent pastures and other grazing lands	0	0
Land under misc. tree crops and groves	0	0
Culturable wasteland	0	0
Fallow lands other than current fallows	0	0
Net area sown	1	16.67

Source: *Land Use Statistics, Ministry of Agriculture, GOI, 2008-09.*

### 9.31.2 Recorded Forest Area

The recorded forest area of the UT is 34 km<sup>2</sup> which is 29.82% of geographical area. Reserved Forests constitute 91.17% and Unclassed Forests 8.82%.

### 9.31.3 Protected Areas

Chandigarh has two Wildlife Sanctuaries covering 26.02 km<sup>2</sup> which constitutes 22.82% of the UT's geographical area. Sukhna lake sanctuary with 1,986 ha area is famous for aquatic birds from Central Asia and Siberia.

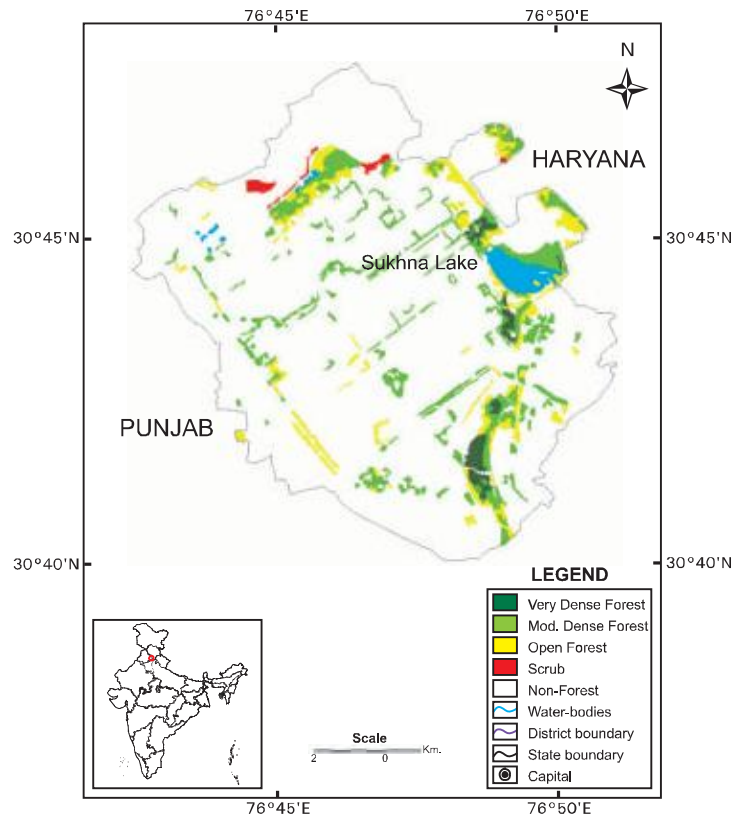
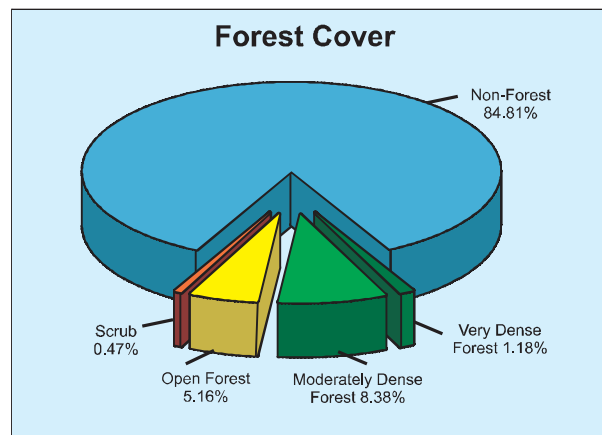


Fig 9.31 Forest cover map of Chandigarh

**9.31.4 Forest Cover**

The forest cover of the UT based on satellite data of October 2008, is 16.78 km<sup>2</sup> which works out to 14.72% of the geographical area. In terms of forest canopy density classes, the UT has 1.35 km<sup>2</sup> very dense forest, 9.55 km<sup>2</sup> moderately dense forest and 5.88 km<sup>2</sup> open forest. The forest cover of the UT is shown in Fig.9.31.



**Table 9.31.2: District wise Forest Cover**

(Area in km<sup>2</sup>)

District	Geographical Area	2011 Assessment				Percent of GA	Change	Scrub
		Very Dense Forest	Mod. Dense Forest	Open Forest	Total			
Chandigarh	114	1.35	9.55	5.88	16.78	14.72	0	0.54

\* There is no change in forest cover and its density as compared to the previous assessment, hence no change matrix is given.

### 9.31.5 Altitude Zone-wise Forest Cover

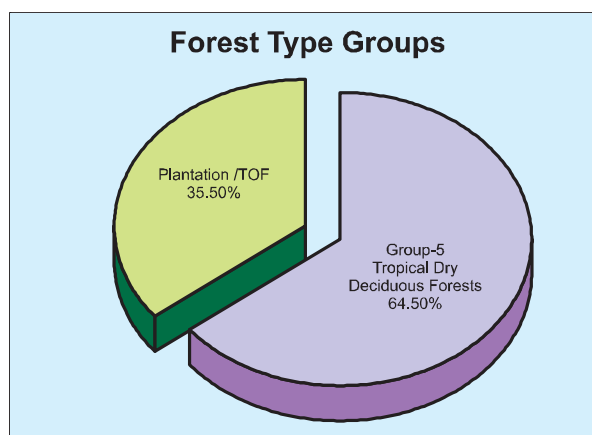
Forest cover of the UT in different altitude zones is given in Table 9.31.3.

Table 9.31.3: Altitude Zone-wise Forest Cover (Area in km <sup>2</sup> )				
Altitude Zone	VDF	MDF	OF	Total
0-500m	1.35	9.55	5.88	16.78
<b>Total</b>	<b>1.35</b>	<b>9.55</b>	<b>5.88</b>	<b>16.78</b>

(Based on SRTM, Digital Elevation Model)

### 9.31.6 Forest Cover in Different Forest Types

Forest type mapping using satellite data has been undertaken by Forest Survey of India with reference to Champion & Seth Classification. As per this assessment, the UT has two forest types which belong to the forest type group-Tropical Dry Deciduous Forests. Distribution of forest cover in forest type group is given in the pie diagram.



### 9.31.7 Tree Cover

Tree cover of the Union Territory has been estimated using TOF inventory data collected over a period of six years, i.e. 2004-10. The

estimated tree cover in the UT is 10 km<sup>2</sup> which is 8.93% of the geographical area of the UT. The forest and tree cover of the UT is presented in Table 9.31.4.

Table 9.31.4: Forest and Tree Cover (Area in km <sup>2</sup> )		
Category	Area	% of Geographical Area
Tree Cover	10.00	8.93
Forest Cover	16.78	14.72
<b>Forest and Tree Cover</b>	<b>26.78</b>	<b>23.65</b>

### 9.31.8 Growing Stock

The growing stock in the recorded forest area has been estimated on the basis of the current forest cover map, forest type map and forest

inventory data. For trees outside forests (TOF), the same has been estimated using TOF inventory data. It is presented in the Table 9.31.5.

**Table 9.31.5: Growing Stock** (million cum)

Forest	TOF	Total
0.288	0.084	0.372