

9.32 DADRA AND NAGAR HAVELI

9.32.1 Introduction

The Union Territory comprises two distinct geographical units, namely; Dadra and Nagar Haveli. It is situated on the western side of the foothills of Western Ghats and lies between latitude 20°0' & 20°25' N and longitude 72°50' and 73°15' E. It has an area of 491 km². It has a hilly terrain towards the north-east and east, surrounded by the Sahyadri range of Western Ghats. The terrain is intersected by the river Daman Ganga and its three tributaries. The average annual rainfall ranges between 2,000

to 2,500mm. The average annual temperature ranges between 25°C to 27.5°C.

The population of the UT is 0.34 million (*Census 2011*) which constitutes 0.03% of the country's population. Of this, rural population is 53.38% and urban population is 46.62%. The population density is 698 persons per km². The livestock population is 0.09 million (*Livestock Census 2007*).

Land use pattern of the Union Territory is given in Table 9.32.1.

Table 9.32.1: Land Use Pattern

Land Use	Area in '000 ha	Percentage
Total geographical area	49	
Reporting area for land utilization	49	100.00
Forests	20	40.82
Not available for cultivation	4	8.16
Permanent pastures and other grazing lands	1	2.04
Land under misc. tree crops and groves	0	0
Culturable wasteland	0	0
Fallow lands other than current fallows	1	2.04
Current fallows	2	4.08
Net area sown	21	42.86

Source: *Land Use Statistics, Ministry of Agriculture, GOI, 2008-09.*

9.32.2 Recorded Forest Area

The recorded forest area is 204 km² which is 41.55% of the geographical area of the UT. Reserved Forests constitute 97.55%, and Protected Forests constitute 2.45%.

9.32.3 Protected Areas

An area of 9,216 ha is being managed as protected area under one Wildlife Sanctuary. This constitutes 18.77% of the UT's geographical area.

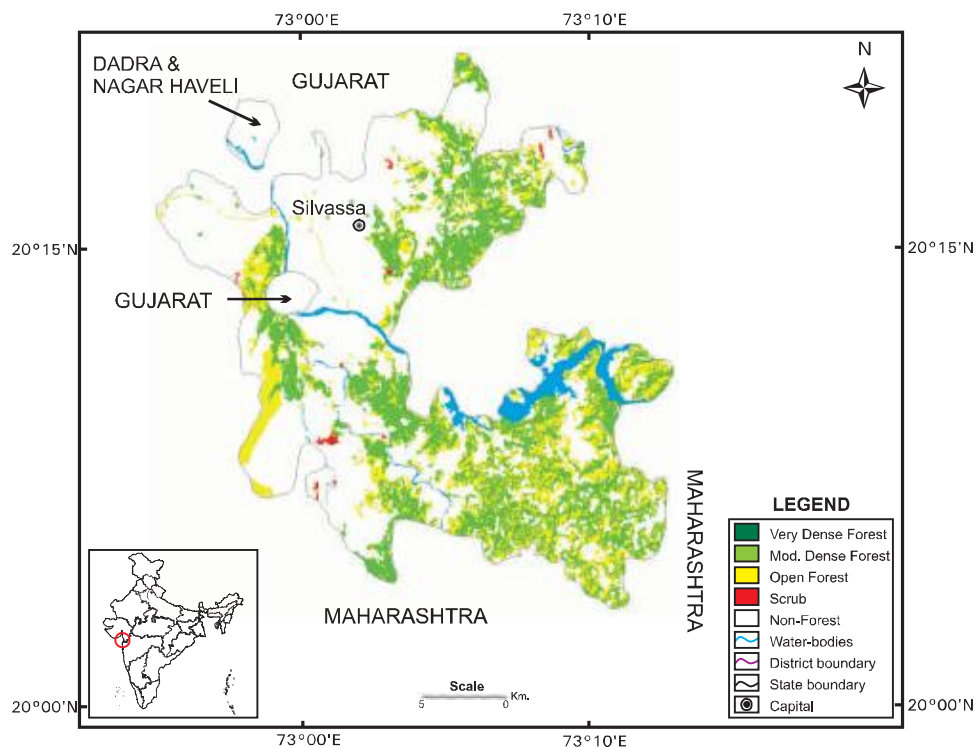
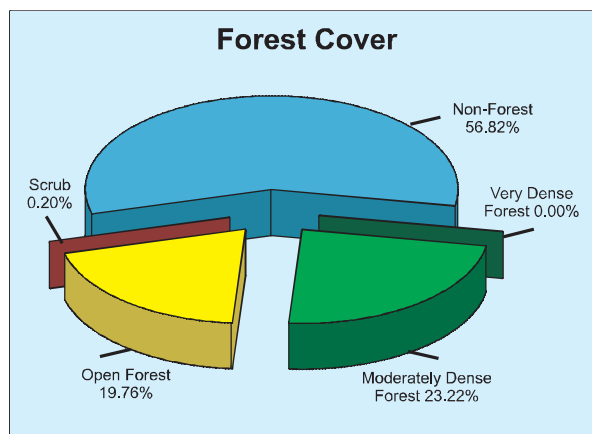


Fig 9.32 Forest cover map of Dadra and Nagar Haveli

9.32.4 Forest Cover

The forest cover in the UT, based on interpretation of satellite data of November 2008, is 211 km² which is 42.97% its geographical area. In terms of forest canopy density classes, the UT has 114 km² area under moderately dense forest and 97 km² open forest. The forest cover of the UT is shown in Fig.9.32.



District-wise forest cover in different canopy density classes and scrub along with the

changes compared to 2009 Assessment are given in Table 9.32.2.

Table 9.32.2: District wise Forest Cover (Area in km²)

District	Geographical Area	2011 Assessment				Percent of GA	Change	Scrub
		Very Dense Forest	Mod. Dense Forest	Open Forest	Total			
Dadra & Nagar Haveli	491	0	114	97	211	42.97	0	1

There is no change in forest cover and its density as compared to the previous assessment.

9.32.5 Altitude Zone-wise Forest Cover.

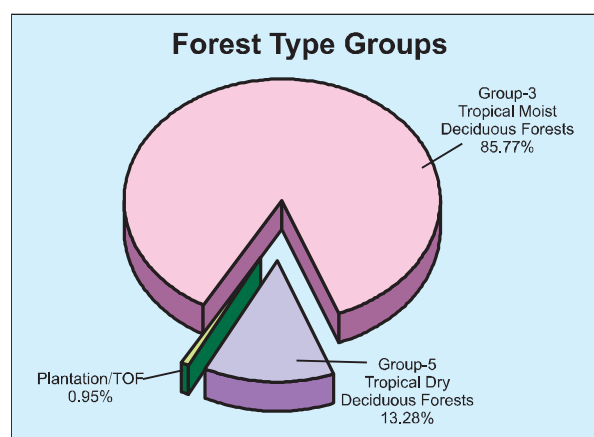
Forest cover of the UT in different altitude zones is given in Table 9.32.3.

Altitude Zone	VDF	MDF	OF	Total
0-500m	0	114	97	211
Total	0	114	97	211

(Based on SRTM, Digital Elevation Model)

9.32.6 Forest Cover in Different Forest Types

Forest type mapping using satellite data has been undertaken by Forest Survey of India with reference to Champion & Seth Classification. As per this assessment, the UT has four forest types which belong to two forest type groups, viz. Tropical Moist Deciduous and Tropical Dry Deciduous Forests. Percentage-wise distribution of forest cover in different forest type groups found in the UT is given in the pie diagram.



9.32.7 Tree Cover

Tree cover of the Union Territory has been estimated using TOF inventory data collected over a period of six years, i.e. 2002-08. The

estimated tree cover in the UT is 27 km² which is 5.50% of the geographical area of the UT. The forest and tree cover of the Union Territory is presented in Table 9.32.4.

Category	Area	% of Geographical Area
Tree Cover	27	5.50
Forest Cover	211	42.97
Forest and Tree Cover	238	48.47

9.32.8 Growing Stock

The growing stock in the recorded forest area has been estimated on the basis of current forest cover map, forest type map and forest

inventory data. For trees outside forests (TOF), the same has been estimated using TOF inventory data. It is presented in the Table 9.32.5.

Table 9.32.5: Growing Stock (million cum)

Forest	TOF	Total
3.994	0.833	4.827

9.32.9 Bamboo

The extent of bamboo bearing area in the forest of the UT is 55 km². Density-wise

occurrence, estimated number of culms by soundness and equivalent green weight are given in the following tables.

Table 9.32.6: Bamboo bearing area by density in recorded forest area (Area in km²)

Recorded Forest Area	Pure bamboo	Dense bamboo	Scattered bamboo	Clumps hacked	Bamboo regeneration	No bamboo
204	0	15	28	3	9	149

Table 9.32.7: Estimated number of bamboo culms and equivalent green weight

Number of culms (in millions)				Equivalent Green Weight (in 000' tonnes)		
Green	Dry	Decayed	Total	Green	Dry	Total
3	0	0	3	212	93	305